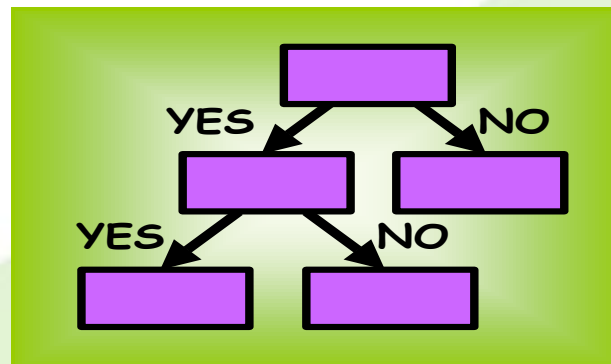




Staffing Assessment

Modified Physical Assessment Trees



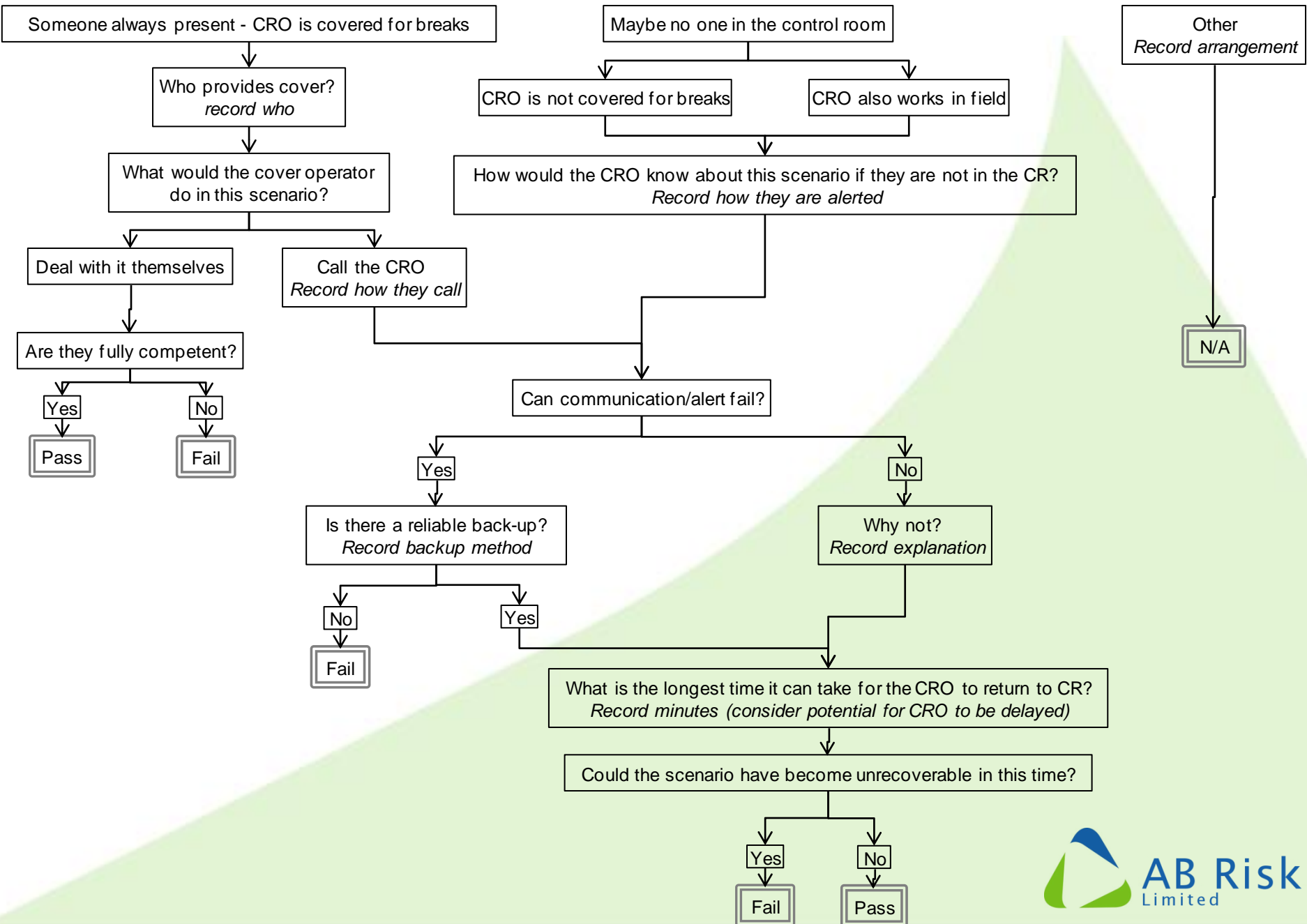
Tel: (+44) 01492 879813

Mob: (+44) 07984 284642

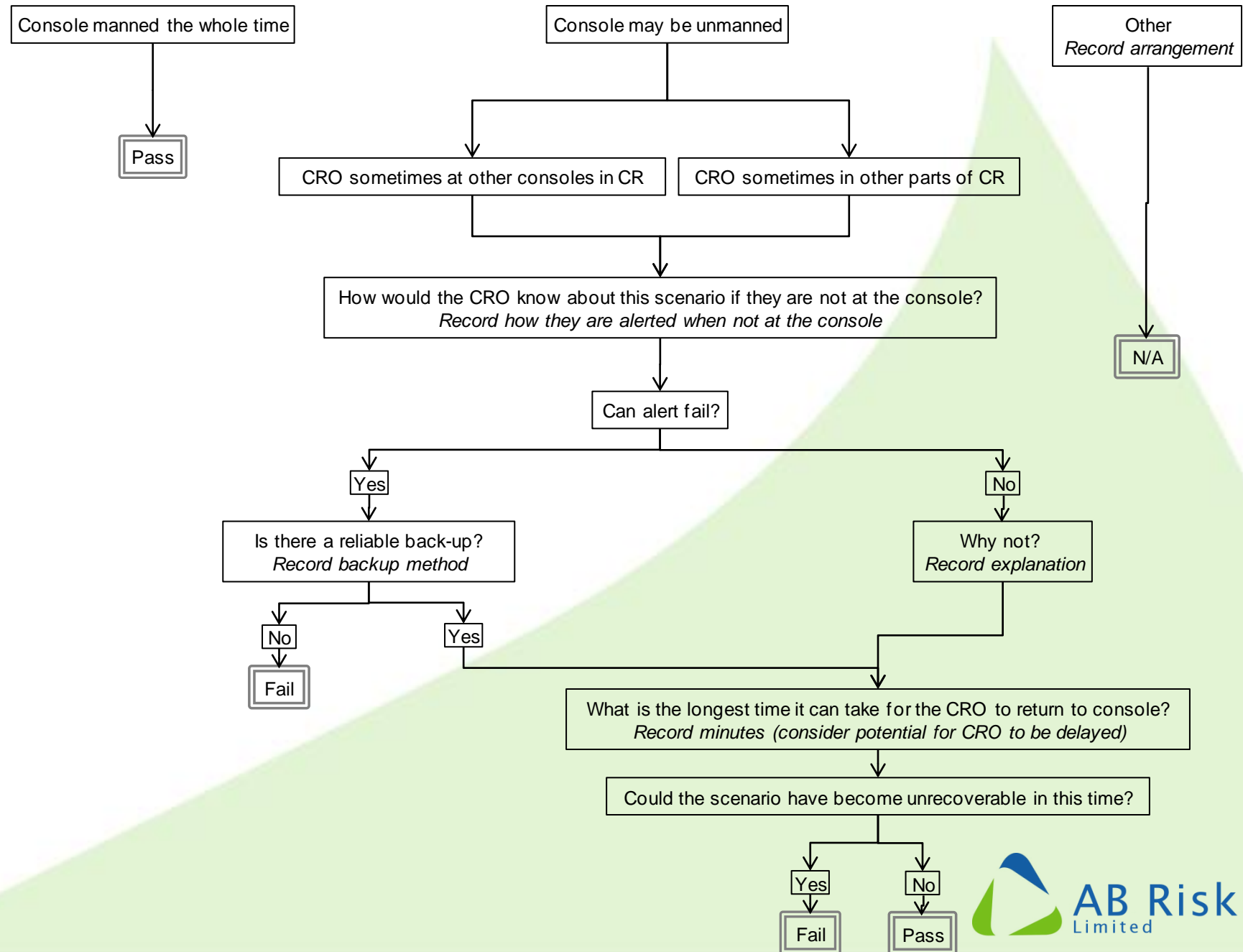
andy@abrisk.co.uk

www.abrisk.co.uk

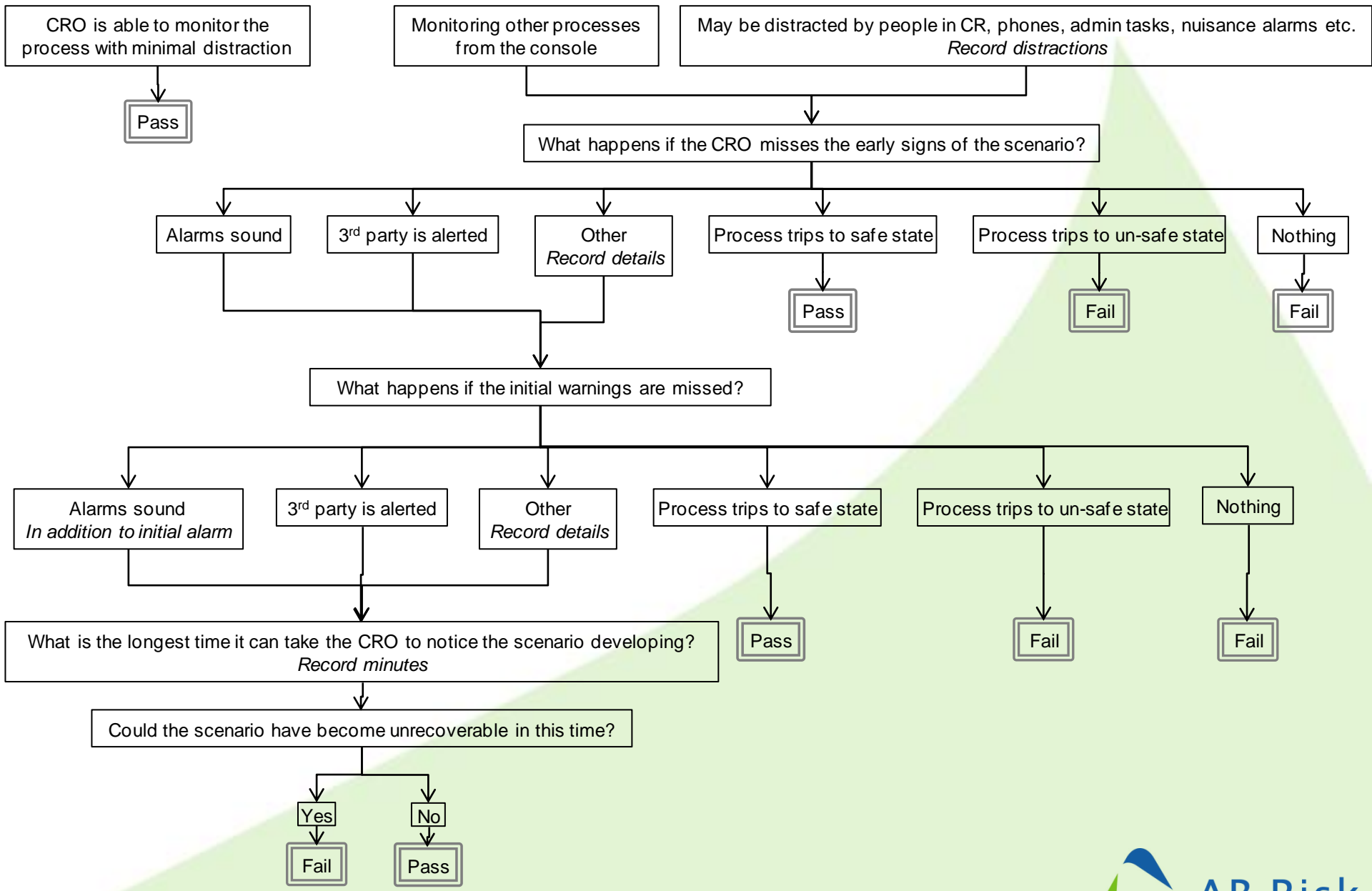
1. Who is likely to be in the control room to detect early signs of the scenario?



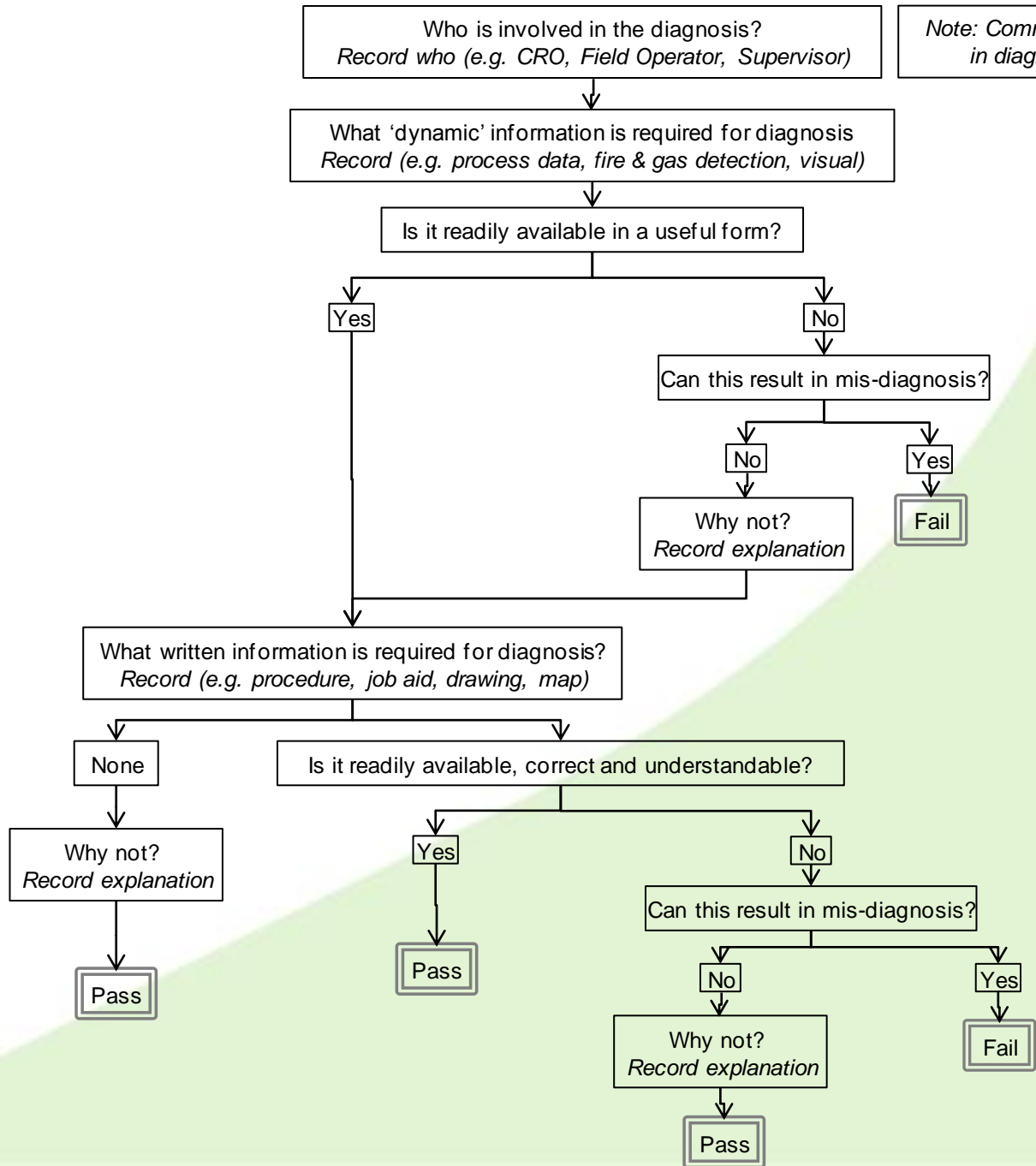
2. How likely is it that the console will be manned when early signs of the scenario are received?



3. How likely is it that the CRO will detect the early signs of the scenario?

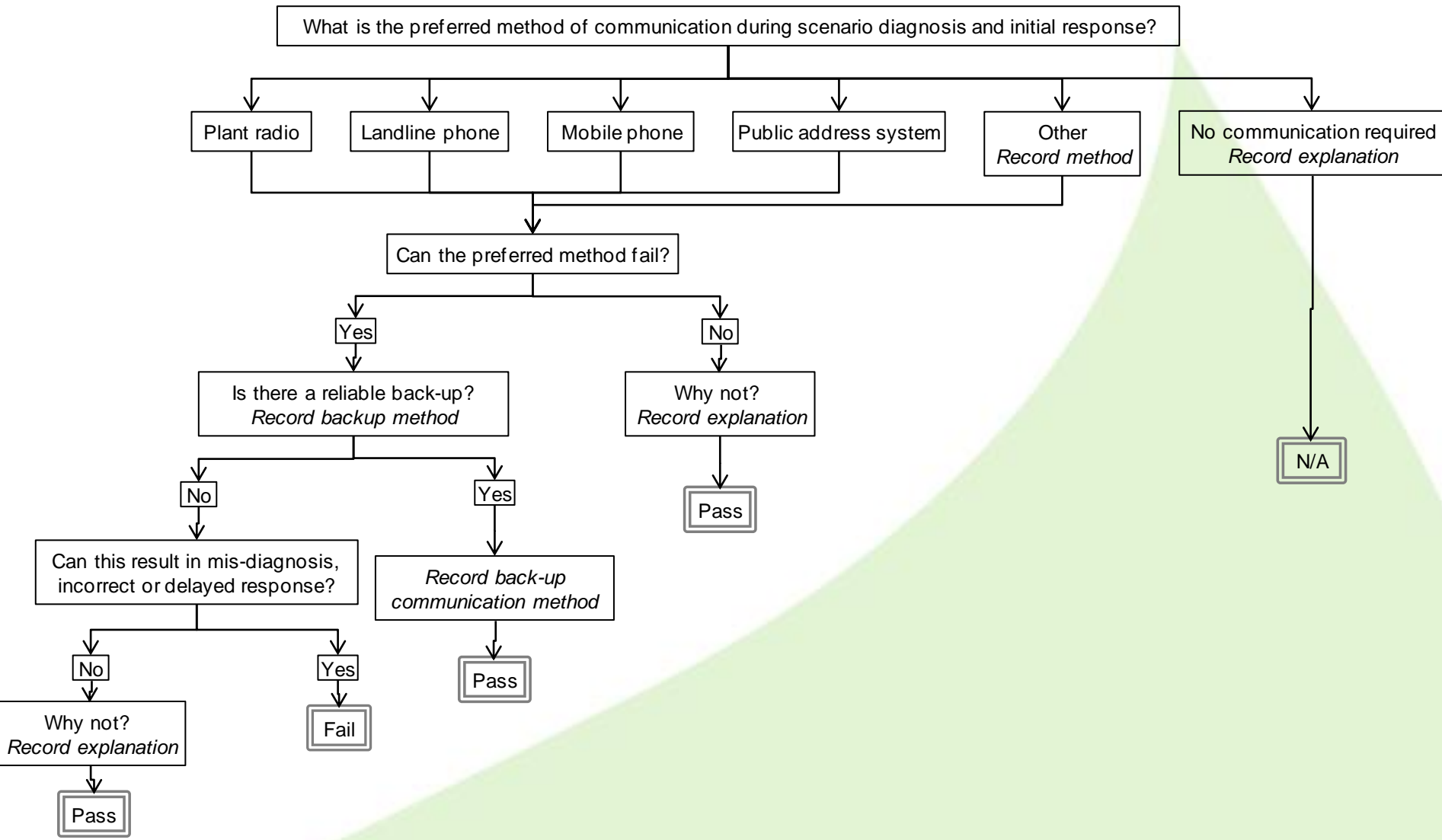


4. How is the scenario diagnosed after initial detection?

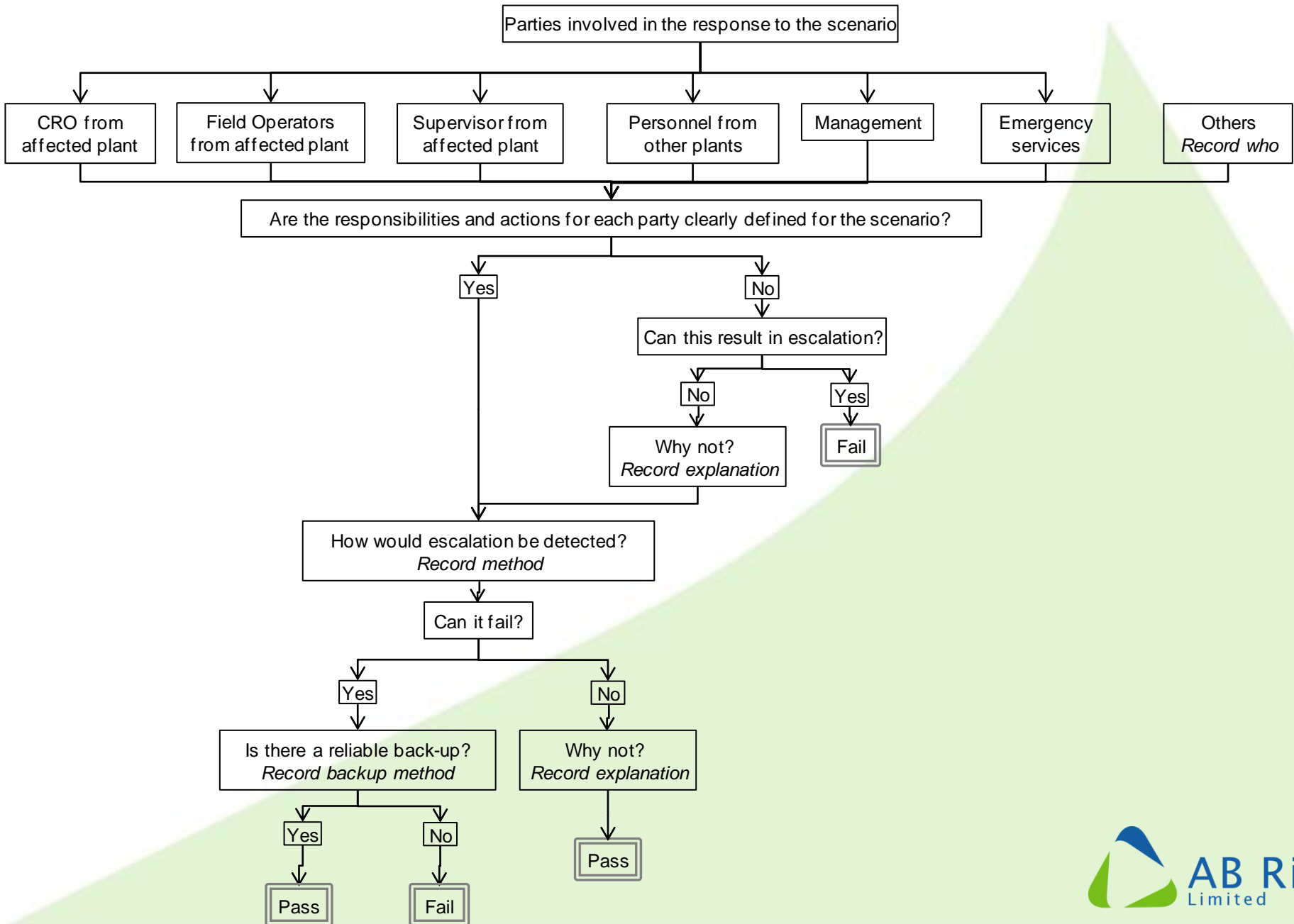


Note: Communication between people involved in diagnosis is covered in the next tree

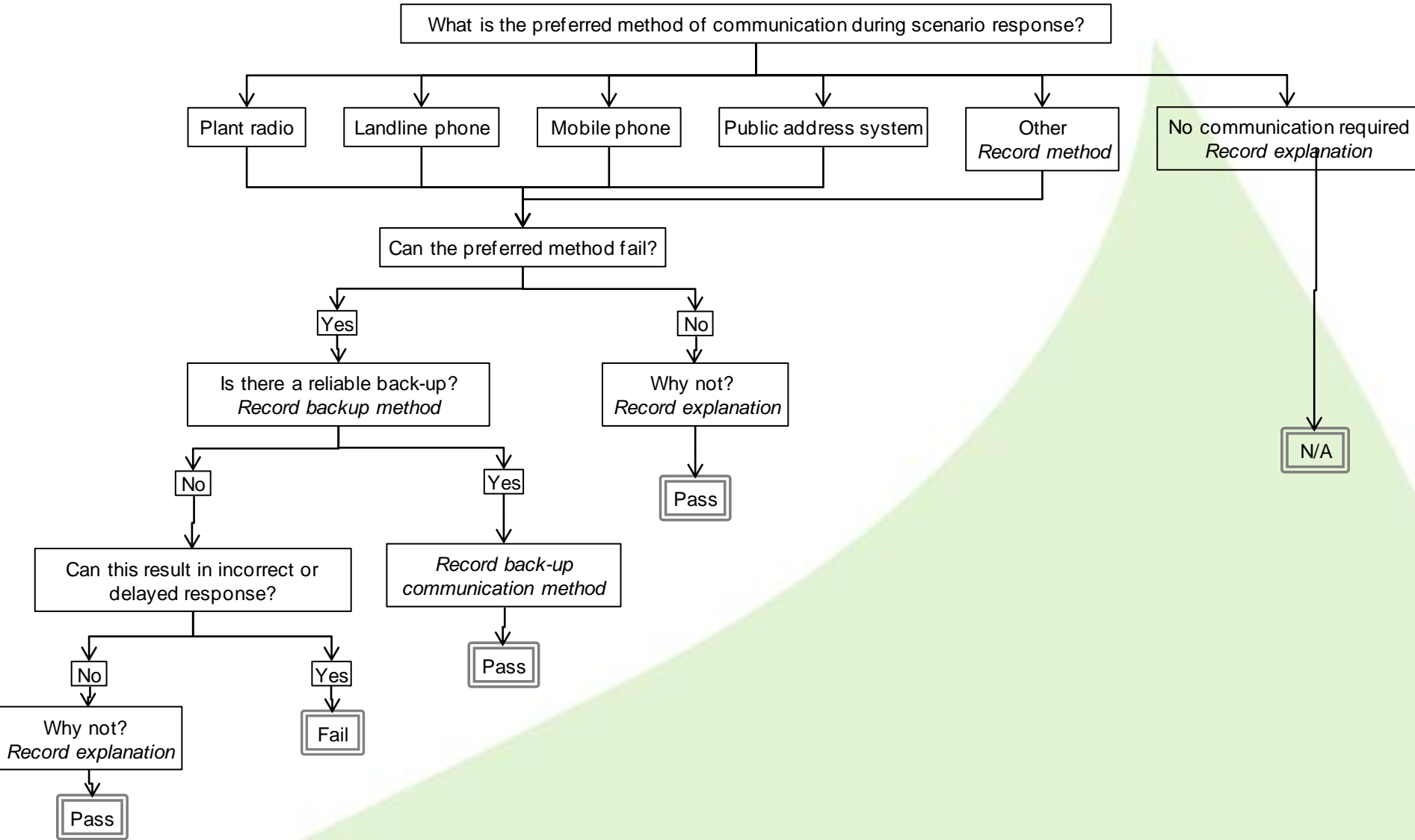
5. How can communication affect diagnosis of the scenario and initial response?



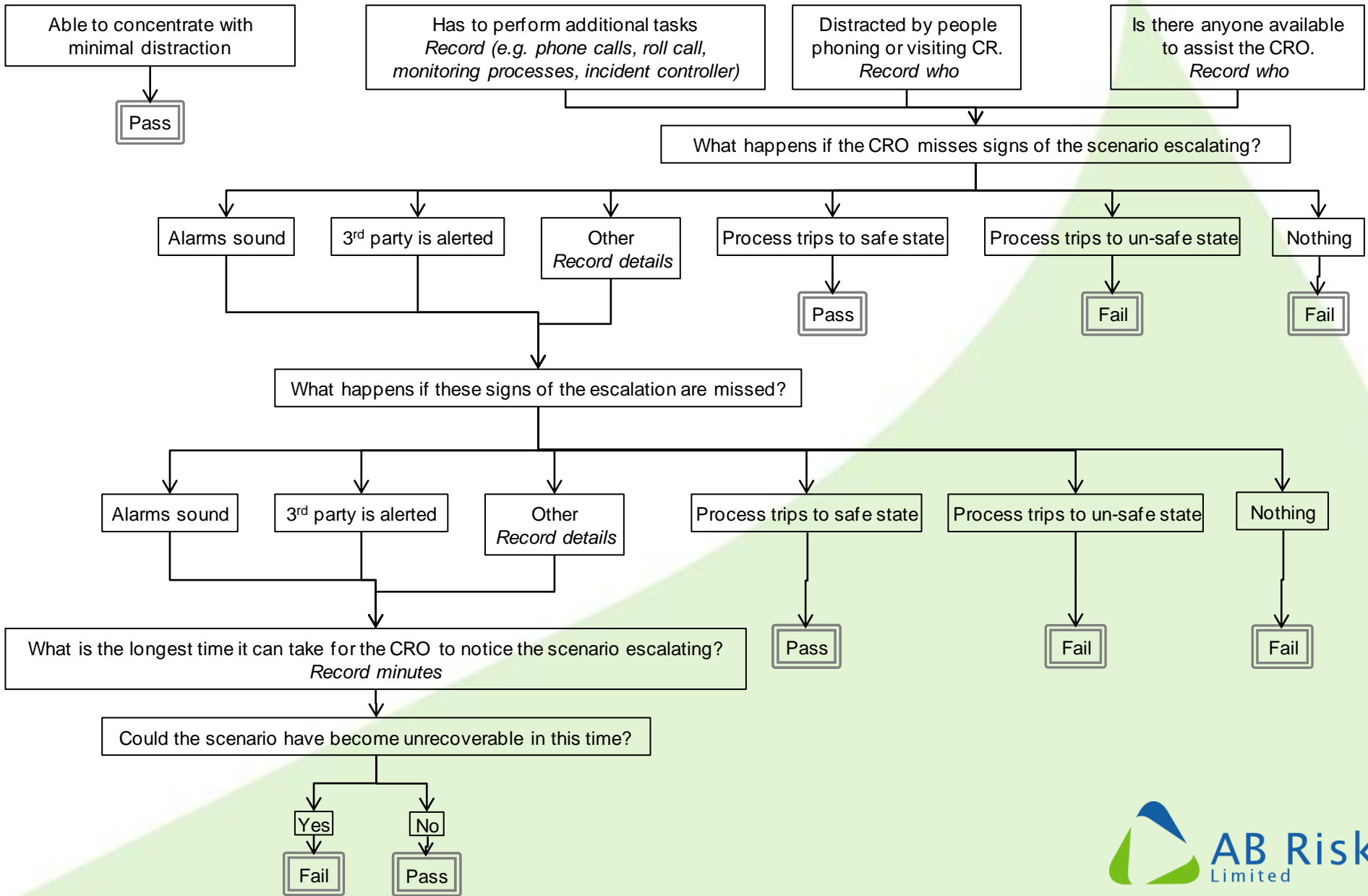
6. Who is involved in the response to the scenario?



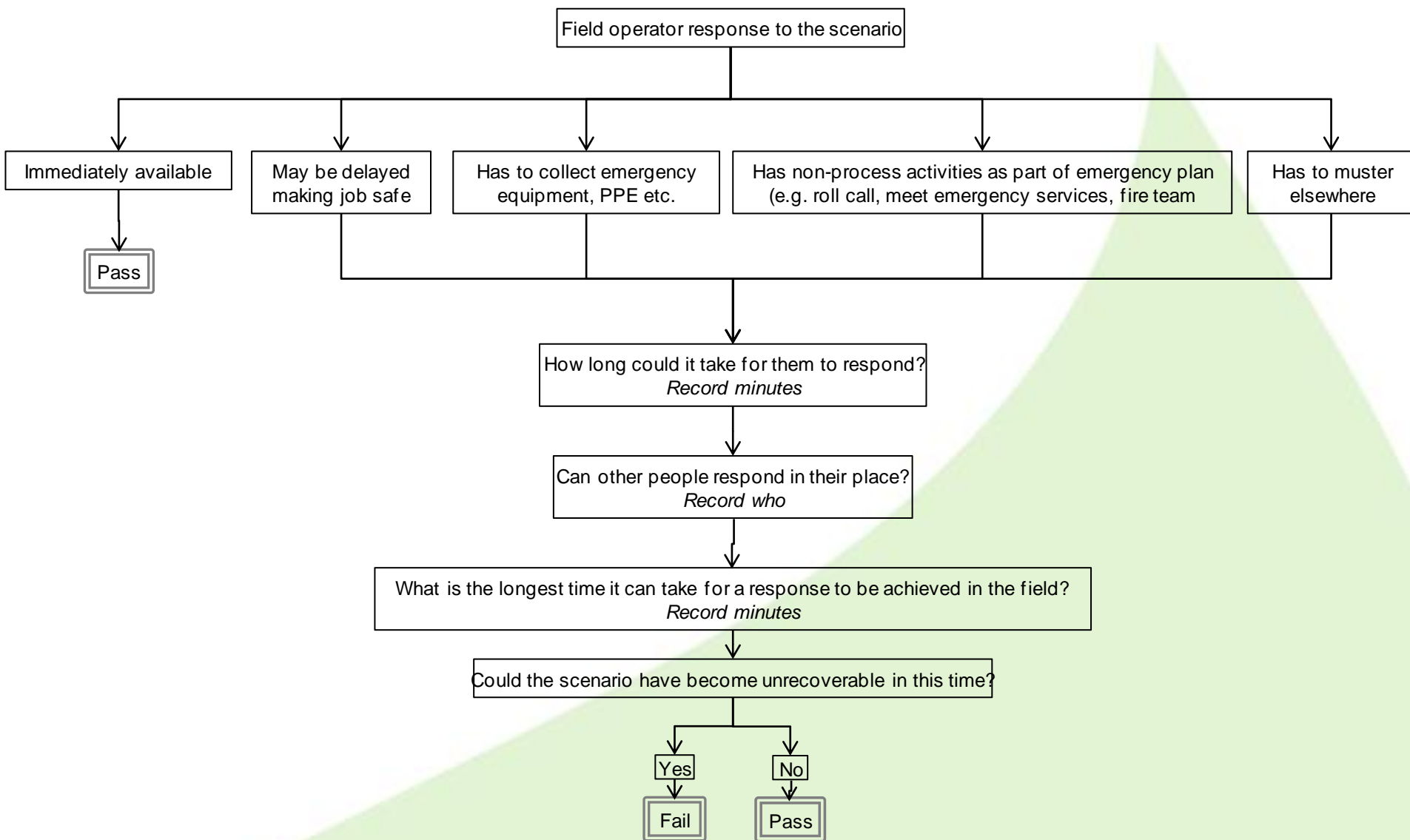
7. How can communication affect response to the scenario?



8a. What is the CRO doing during the response to the scenario?



8b. What are Field Operators doing during the response to the scenario?



8c. What is the Incident Controller doing during the response to the scenario?

